



**IESNA  
SUSTAINING  
MEMBER**



<b>Test Report Number:</b>	<b>LCZP14070102</b>	Total Pages: 7
<b>Applicant Name:</b>	L-TECH CORPORATION	
<b>Applicant Address:</b>	SHAOGANGTOU DISTRICT, QIAOTOU TOWN, DONGGUAN CITY, GUANGDONG PROVINCE, CHINA	
<b>Test item:</b>	LED Downlight	
<b>Model / Type Reference:</b>	LRKT560/563-9040	
<b>Date of Issue:</b>	2014-07-15	
<b>Testing Laboratory:</b>	LCTECH (Zhongshan) Testing Service Co.,Ltd 2/F., Technology and Enterprise Development Center, Guangyuan Road, Xiaolan, Zhongshan, Guangdong, China	
<b>Test Specification:</b>	Photometric test (According to IES LM-79-08)	
<b>Test Result:</b>	See following pages	
<b>Compiled by:</b>	<b>Reviewed by:</b>	
2014-07-15	Lin Qiu	2014-07-15
		Richard Li
_____	_____	_____
Date	Name	Signature
		Date
		Name
		Signature
<b>Remark:</b>	N/A	
<p>The duplication of this report or parts of it and its use for advertising purposes is only allowed with permission of the testing laboratory. This report contains the result of the examination of the product sample submitted by the applicant. A general statement concerning the quality of the products from the series manufacture cannot be derived therefore.</p>		



**DESCRIPTION INFORMATION (From Photometric File)**

IESNA:LM-63-1995  
[TEST] LCZP14070102  
[DATE] 2014-7-12  
[MANUFAC] L-TECH CORPORATION  
[LUMCAT] LRKT560/563-9040  
[LUMINAIRE] LED Downlight  
[LAMPCAT] LED  
[LAMP] LED  
[OTHER] ELECTRICAL VALUES:120.04VAC 0.174A 15.72W 0.756

**CHARACTERISTICS**

Total Luminaire Lumens	1227.99
Luminaire Efficacy	78
Total Luminaire Watts	16
CIE Type	Direct
Spacing Criteria (0-180)	1.20
Spacing Criteria (90-270)	1.20
Spacing Criteria (Diagonal)	1.30
Basic Luminous Shape	Circular
Luminous Length (0-180)	0.12 m (Diameter)
Luminous Width (90-270)	0.12 m (Diameter)
Luminous Height	0.00 m

**LUMINANCE DATA (cd/sq.m)**

Angle In Degrees	Average 0-Deg	Average 45-Deg	Average 90-Deg
45	36346	36328	36201
55	30618	30609	30459
65	22117	22121	21987
75	10563	10359	10424
85	5009	5019	4923



**CANDELA TABULATION**



	<u>0</u>	<u>15</u>	<u>30</u>	<u>45</u>	<u>60</u>	<u>75</u>	<u>90</u>
<b>0</b>	531.08	531.08	531.08	531.08	531.08	531.08	531.08
<b>5</b>	528.61	529.01	528.72	528.57	528.12	528.03	526.86
<b>10</b>	519.88	519.41	519.67	519.67	519.08	519.05	517.50
<b>15</b>	504.62	505.04	504.33	504.59	504.44	504.36	502.40
<b>20</b>	483.77	484.24	484.37	484.22	484.14	483.75	482.12
<b>25</b>	457.59	457.88	457.58	457.65	457.64	457.33	456.42
<b>30</b>	425.88	426.92	426.69	426.55	426.50	426.32	424.75
<b>35</b>	390.19	390.72	390.47	390.32	390.33	390.05	389.09
<b>40</b>	349.61	350.72	350.05	350.13	349.87	350.17	349.16
<b>45</b>	305.51	305.47	305.28	305.36	305.52	305.03	304.29
<b>50</b>	258.02	259.26	258.86	258.63	258.50	257.81	257.16
<b>55</b>	208.76	208.99	209.31	208.70	209.02	208.48	207.68
<b>60</b>	159.46	159.23	159.66	158.92	158.85	158.85	159.04
<b>65</b>	111.11	110.99	111.12	111.13	111.44	110.86	110.46
<b>70</b>	67.37	67.09	67.71	67.31	67.71	67.63	67.08
<b>75</b>	32.50	31.98	31.91	31.87	31.69	31.68	32.07
<b>80</b>	12.48	12.34	12.24	12.03	12.02	11.78	11.72
<b>85</b>	5.19	5.05	5.15	5.20	5.15	5.17	5.10
<b>90</b>	0.91	0.81	0.78	0.68	0.58	0.47	0.45
<b>95</b>	0.43	0.41	0.41	0.43	0.40	0.40	0.40
<b>100</b>	0.43	0.45	0.44	0.44	0.42	0.46	0.43
<b>105</b>	0.48	0.46	0.47	0.47	0.48	0.47	0.46
<b>110</b>	0.52	0.52	0.50	0.51	0.52	0.51	0.55
<b>115</b>	0.53	0.52	0.54	0.52	0.51	0.50	0.50
<b>120</b>	0.55	0.55	0.54	0.53	0.54	0.56	0.53
<b>125</b>	0.58	0.63	0.59	0.60	0.61	0.59	0.60
<b>130</b>	0.64	0.65	0.64	0.63	0.64	0.64	0.64
<b>135</b>	0.62	0.59	0.61	0.62	0.59	0.61	0.60
<b>140</b>	0.67	0.70	0.69	0.70	0.70	0.66	0.67
<b>145</b>	0.82	0.83	0.85	0.83	0.86	0.84	0.82
<b>150</b>	1.08	1.06	1.10	1.08	1.08	1.07	1.08
<b>155</b>	1.32	1.32	1.34	1.32	1.33	1.31	1.34
<b>160</b>	1.68	1.67	1.70	1.69	1.70	1.71	1.70
<b>165</b>	2.06	2.09	2.07	2.07	2.07	2.09	2.10
<b>170</b>	2.35	2.34	2.31	2.32	2.34	2.34	2.32
<b>175</b>	2.48	2.48	2.46	2.48	2.47	2.46	2.48
<b>180</b>	2.57	2.57	2.57	2.57	2.57	2.57	2.57



**ZONAL LUMEN SUMMARY**

Zone	Lumens	%Lamp	%Fixt
0-30	402.91	32.8	32.8
0-40	646.69	52.7	52.7
0-60	1068.56	87	87
0-90	1223.45	99.6	99.6
90-120	1.55	.1	.1
90-130	2.08	.2	.2
90-150	3.11	.3	.3
90-180	4.53	.4	.4
0-180	1227.98	100	100

Total Luminaire Efficiency = 100%

**ZONAL LUMEN SUMMARY**

Zone	Lumens
0-10	50.14
10-20	142.17
20-30	210.6
30-40	243.77
40-50	235.24
50-60	186.63
60-70	110.88
70-80	37.74
80-90	6.27
90-100	.53
100-110	.5
110-120	.52
120-130	.53
130-140	.49
140-150	.54
150-160	.62
160-170	.57
170-180	.23

Note: The luminaire was LED luminaire, the luminaire lumens was also considered as bare lamp lumens.

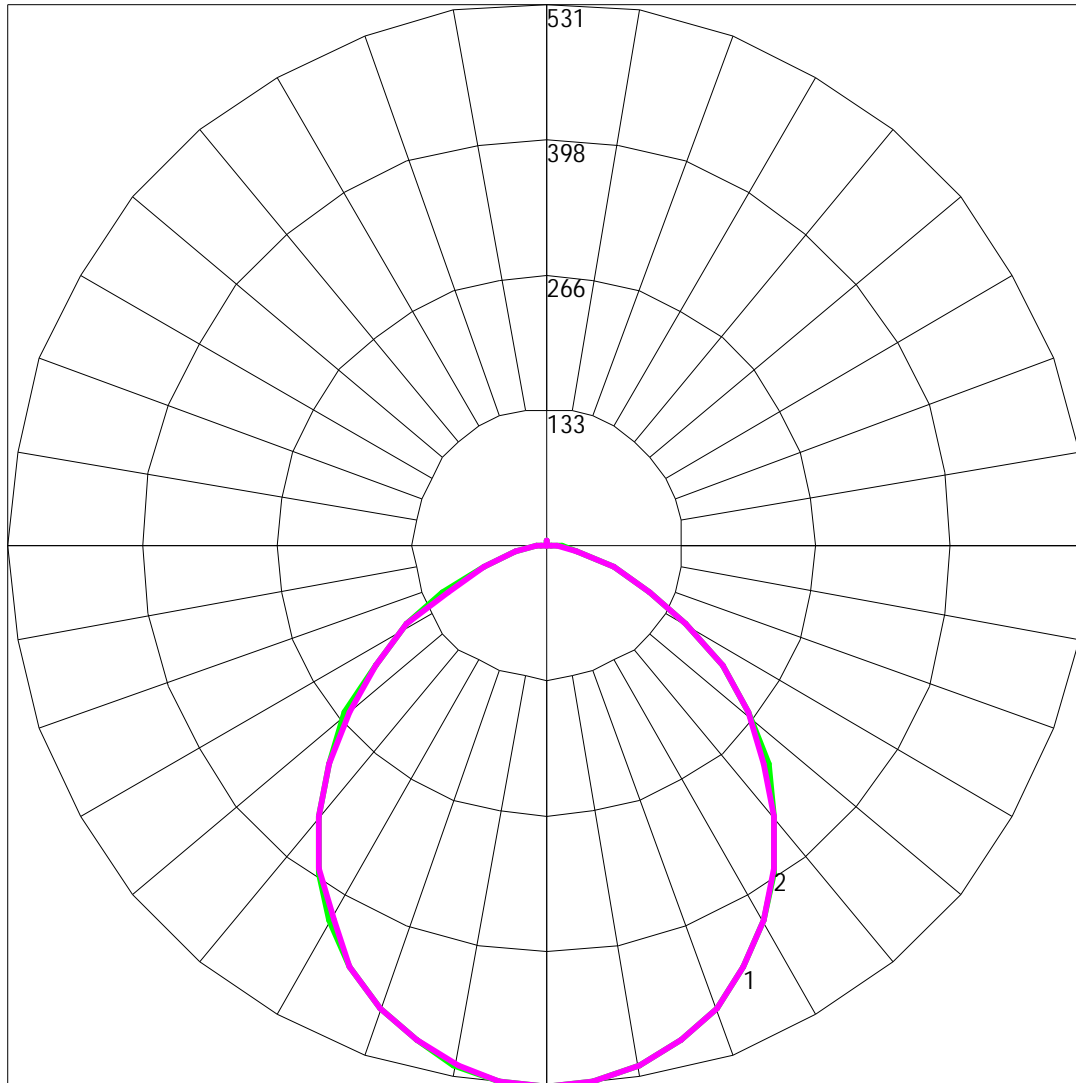


**COEFFICIENTS OF UTILIZATION - ZONAL CAVITY METHOD**

Effective Floor Cavity Reflectance 0.20

RC	80				70				50			30			10			0		
	RW	70	50	30	10	70	50	30	10	50	30	10	50	30	10	50	30	10	0	
0	119	119	119	119	119	116	116	116	116	111	111	111	111	106	106	106	102	102	102	100
1	110	106	102	99	99	108	104	101	98	100	97	94	96	94	91	92	90	89	87	
2	101	94	88	83	83	99	92	87	82	89	84	80	85	82	78	82	79	76	74	
3	93	84	76	70	70	91	82	75	70	79	73	68	76	71	67	74	70	66	64	
4	86	75	67	60	60	84	73	66	60	71	64	59	69	63	58	66	62	58	56	
5	79	67	59	53	53	77	66	58	52	64	57	52	62	56	51	60	55	51	49	
6	73	61	52	46	46	71	60	52	46	58	51	46	56	50	45	55	49	45	43	
7	68	55	47	41	41	66	55	47	41	53	46	41	52	45	40	50	45	40	38	
8	64	51	43	37	37	62	50	42	37	49	42	37	47	41	36	46	40	36	34	
9	59	47	39	33	33	58	46	39	33	45	38	33	44	38	33	43	37	33	31	
10	56	43	36	30	30	55	43	35	30	42	35	30	41	34	30	40	34	30	28	

Note: The luminaire was LED luminaire, the luminaire lumens was also considered as bare lamp lumens.

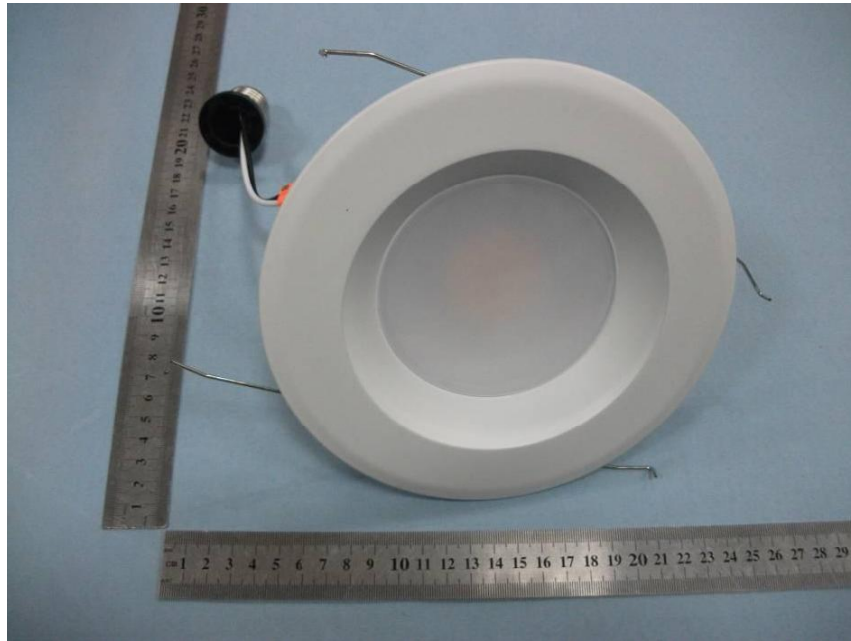


Maximum Candela = 531.08 Located At Horizontal Angle = 0, Vertical Angle = 0

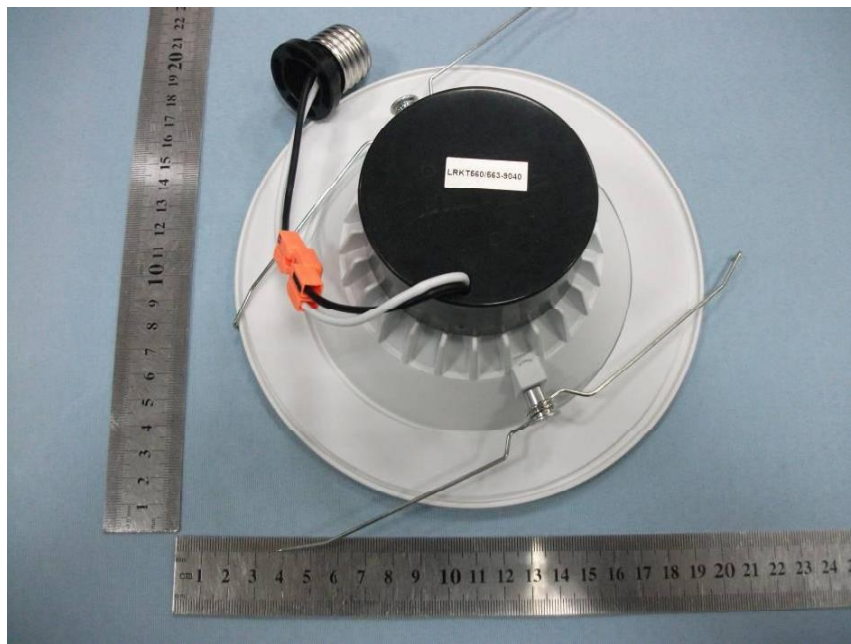
# 1 - Vertical Plane Through Horizontal Angles (0 - 180)

# 2 - Vertical Plane Through Horizontal Angles (90 - 270)

Photo of sample



Picture 1 Front View



Picture 2 Back View

--End of test report--